





“ **phs** Group delivers great customer service by having one point of contact to deal with. Furthermore we would recommend **phs** as they have a great variety of services from mats to washroom products. ”

Andrew Morris – Procurement Manager, UK Mail

41% 
of workplace injuries
are caused by...
SLIPS, TRIPS & FALLS

Why phs Floorcare?

- ✓ At **phs** Group we understand your challenges and know what's important to your business.
- ✓ We look beyond the entrance to provide the very best mat solutions designed to provide a hygienic and safe environment for your visitors and staff; protect your brand reputation, and promote health and well-being.
- ✓ In fact we are the UK leader of floor hygiene with a service fit for the Queen! We have a Royal Warrant for our mats.



➤ But why does what we do matter?



As hygiene specialists, we understand what really makes a difference to you and your workplace. When businesses think about floorcare they often simply think about entrance mats & onsite cleaning. At **phs** we understand that proper professional servicing is essential – which is why we don't sell any of our mats direct – and that a real floorcare solution looks beyond the entrance to every area of your workplace.

Proper floorcare is not only about providing good hygiene, it's about providing comfort to staff who stand in one place for long periods of time, and it's about preventing slip hazards and health & safety risks throughout your building. **A good floorcare solution will improve hygiene, health & safety, and staff morale, and can help you to save you money on unnecessary cleaning costs.**



Your floorcare solution

Our new mats are made with ECONYL® yarn

ECONYL® yarn is a 100% regenerated and regenerable Nylon 6, made from waste, such as fluff from carpets, textiles and recovered fishing nets disposed in the sea. So, our mats are not only helping keep your floors clean, they are helping to clean up the oceans.



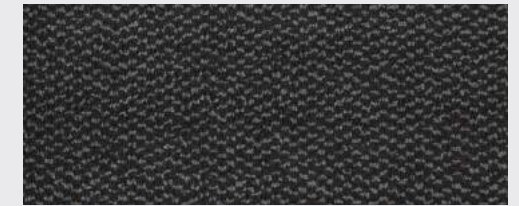
Standard

Design features: Functional & versatile. Ideal for heavy traffic areas and buildings where a high level of cleanliness is critical.
Colours: Mink, Sapphire, Brazil, Rainforest



Principal

Design features: Super absorbent. Captures 50% more soiling than standard solution dyed mats and offers superior long-term appearance retention. A large mat with sizes up to 2x2m.
Colours: Blue, Mink



Ultra Plus

Design features: Heavy duty absorber. Effectively removes and absorbs more heavy duty foot born dirt than other matting.



Tuff

Design features: Heavy Duty Outdoor Mat. A stiff scraping and deep pile help to prevent heavy deposits such as mud, snow, sand and grit, from entering your building.



Hand dryer mats

Design features: Stop the need for wet floor signs. Hand dryers are a typical area for collecting water. Prevent accidents by installing hand dryer mats.



Unicolour

Design features: Available in 10 different bold colours. Unicolour mats are solution dyed giving a deeper & longer lasting colour.



All products above are made with ECONYL® yarn



DID YOU KNOW?

On average an entrance mat absorbs so much material that it becomes ineffective after two weeks of use.

Our servicing commitment

We don't sell mats direct because we believe that dedicated mat servicing is essential to creating a properly hygienic working environment. All of our mats listed are either **serviced on-site** or come as part of our **lift and lay service**, and are collected on a regular basis to be thoroughly cleaned back at our dedicated local nationwide depots.



LOOSE LAY MATS

What? A loose lay mat is any mat that is not permanently fitted into a mat well, and that is taken off-site, cleaned and replaced on a regular basis as part of our lift and lay service.

Why? Loose lay mats are a flexible and comprehensive solution for tackling the widest range of floorcare needs, from collecting dirt and moisture to preventing slip and trip hazards.



Comfort

Design features: An anti-fatigue mat designed for comfort. Water resistant and resilient to impact, the ergonomic properties of this Anti-fatigue comfort mat reduces strain when standing for long periods.



Ultraflow

Design features: An anti-fatigue mat designed for comfort - and for use in wet areas. Durable design helps to prevent slipping, while the studded pattern on the bottom permits drainage and air circulation.



Coffee vend/water cooler mats

Design features: Combat spills and soiling. Reduce costs in maintenance by putting mats beneath common spill areas.



Image/Logo

Design features: Logo & image mats are a great way to protect your floors & create an impression. Today's high definition printing means virtually any design is possible.



DID YOU KNOW?

An estimated 11.6 million working days a year are lost to work-related MSDs.*

MSDs: Musculoskeletal disorders*(<http://www.hse.gov.uk/msd/msds.htm>)

Your floorcare solution

FITTED MATS

What? A fitted mat is any mat that has been permanently fitted into a mat well.

Why? Our Tergo HD, Prior HD, and Forma HD fitted tiles are serviced on-site. All other fitted mats are cleaned off-site and replaced as part of our lift & lay service.



Tergo HD*

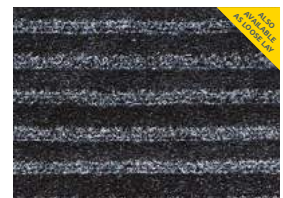


Prior HD*



Forma HD*

***Design features:** 3 x the protection, 3 x the style. 3 different tile designs with flexible combinations absorb heavy duty moisture and scrape off excessive dirt.



Principal

Design features: The same super absorbent construction as our loose lay principal mat fitted to your specific requirements.

Colours: Blue, Mink

Lift car mat

Design features: Fitted mats prevent the slip and trip hazards of surface finishers and costly maintenance for carpets that are common within lift cars.

Our fitted mats are available in 12 different colours.

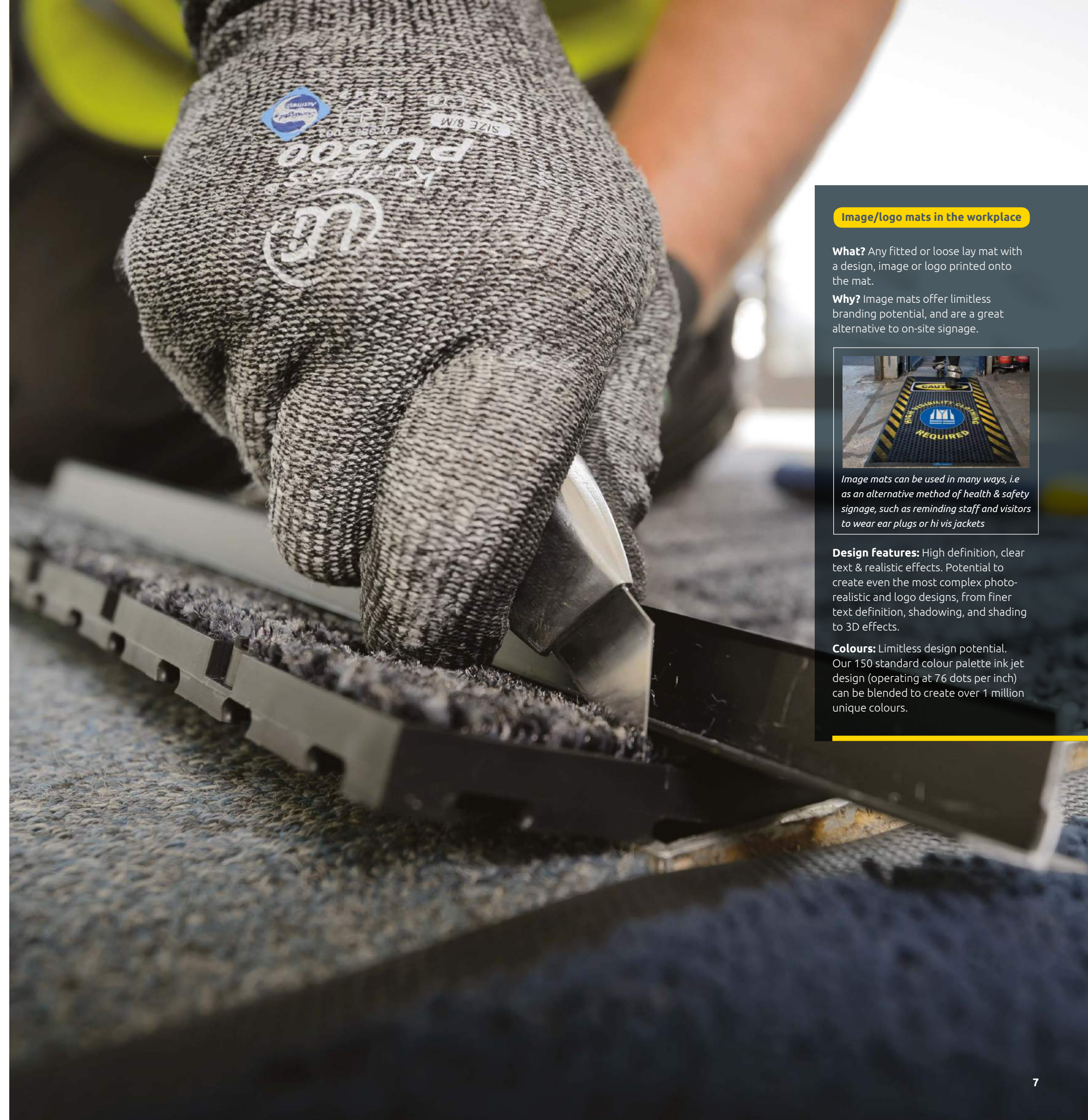


TWISTING & TURNING...

to press elevator buttons make lift cars an ideal place to fit a mat

ECONYL®
Made with 100% Regenerated Nylon

All products above are made with ECONYL® yarn



Image/logo mats in the workplace

What? Any fitted or loose lay mat with a design, image or logo printed onto the mat.

Why? Image mats offer limitless branding potential, and are a great alternative to on-site signage.



Image mats can be used in many ways, i.e. as an alternative method of health & safety signage, such as reminding staff and visitors to wear ear plugs or hi vis jackets

Design features: High definition, clear text & realistic effects. Potential to create even the most complex photo-realistic and logo designs, from finer text definition, shadowing, and shading to 3D effects.

Colours: Limitless design potential. Our 150 standard colour palette ink jet design (operating at 76 dots per inch) can be blended to create over 1 million unique colours.

Mats around the workplace

Mats help to create a cleaner, drier, safer working environment for your staff and visitors, with benefits extending far beyond the main entrance.

Entrance & Reception

Fitted, Principal, Tuff, Image/Logo & Standard

- Create the first line of defence to stop dirt and moisture entering your building
- Keep floors cleaner in your reception and entrance areas
- Logo mats help to reinforce your brand and create a great first impression

Commercial kitchen

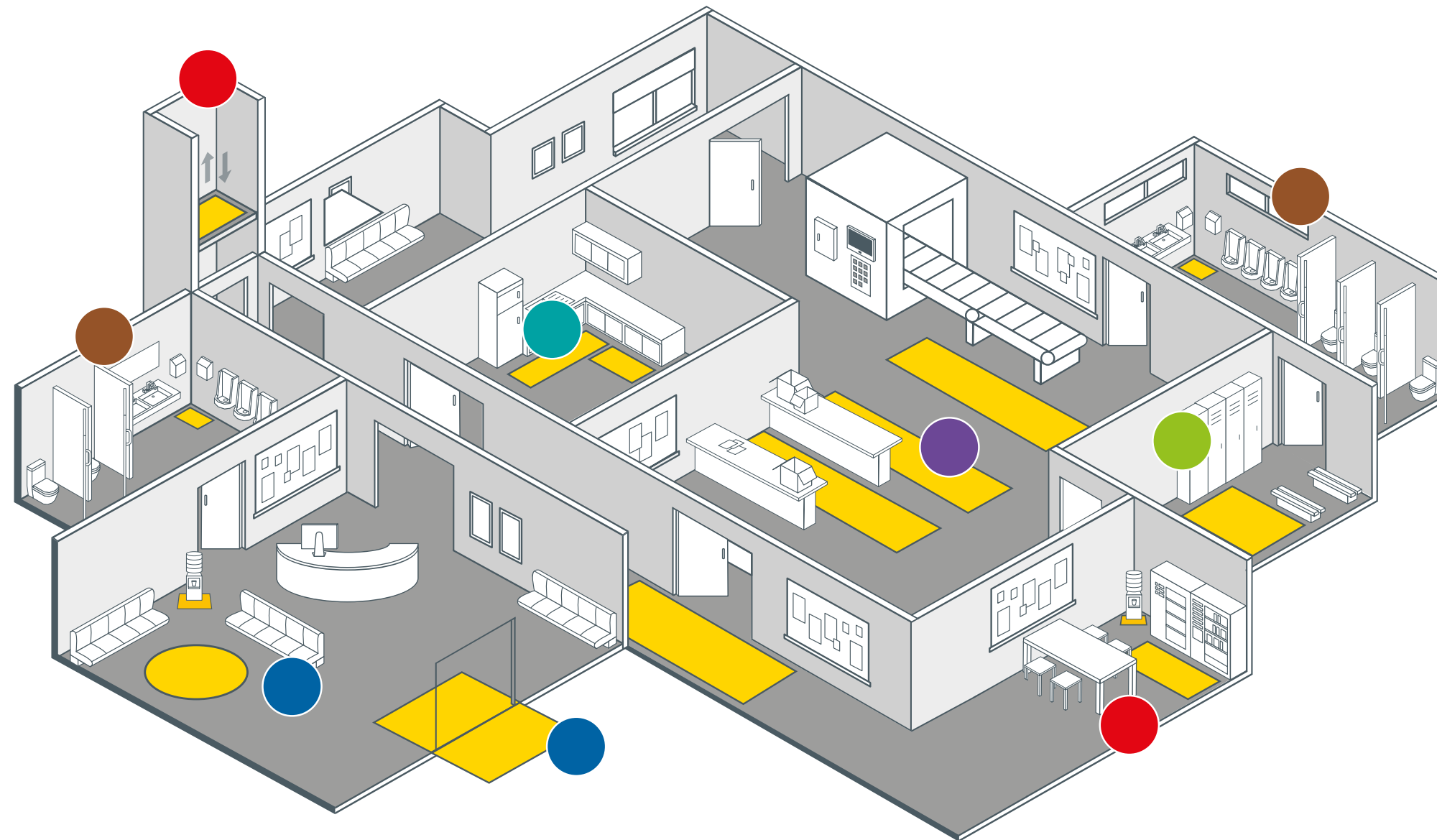
Ultraflow

- Provide extra comfort for kitchen staff standing for long periods
- Reduce the risk of slips and trips from typical kitchen spillages
- Mats specially designed for wet areas help to provide the safest and most hygienic solution for kitchens

Corridors, lifts & vending

Fitted, Image/logo, Standard, Principal & Lift Car

- Eliminate germs and dirt in a typically high traffic area being carried from one room to another
- Remind visitors and staff to follow the correct health and safety procedures as they walk between rooms i.e to wear ear plugs or hi vis jackets before entering specific rooms.
- Reduce the slip hazards commonly found in front of drinks dispensing machines by absorbing spilt liquids
- Reinforce branding across visitor facing locations



Manufacturing area

Comfort, Image/logo, Ultra Plus & Ultraflow

- Provide extra comfort for staff working on production lines
- Prevent slips and trips on oil and grease
- Improve hygiene with mats specially designed for wet areas
- Remind staff to follow correct health and safety with image/logo mats

Changing room

Ultra Plus & Ultraflow

- Prevent slips and trips on wet hard surfaces
- Improve comfort for staff and visitors standing barefoot on cold hard surfaces
- Reinforce branding across visitor facing locations

Washroom

Hand dryer

- Prevent slips & trips from water that typically collects beneath hand dryers
- Eliminate the need for wet floor signs after a washroom has been cleaned.

phs Matting products

Standard ●●

A highly functional mat that can be used for a variety of different purposes right the way across your work place.

Tuff ●

Heavy duty outdoor mat. Placed outside any incoming entrance where there is a need for heavy duty protection such as sport changing areas and outside school entrances.

Fitted ●●

Fitted mats are ideal for areas where clearance between doorways and floors may cause an issue, and can be placed in a number of different areas across your work place.

Principal ●●

Ideal for high traffic areas such as entrance points and corridors and for covering large spaces such as wide entrances for wheelchair access.

Comfort ●

Heavy duty rubber mats with unique cushion and ergonomic properties that work to reduce fatigue when standing for long periods.

Image/Logo ●●●●

Limitless design opportunities. From creating a complete brand experience, to providing additional health and safety signage.

Lift car ●

Prevent slip and trip hazards of surface finishers and costly maintenance for carpets by installing fitted lift mats.

Ultraflow ●●●

The Ultraflow is a comfort mat specially designed for wet areas. The durable surface texture and design helps to prevent slipping, while the studded pattern on the bottom permits drainage and air circulation.

Coffee vend/water cooler ●●

Reduce costs in maintenance by putting mats beneath common spill areas.

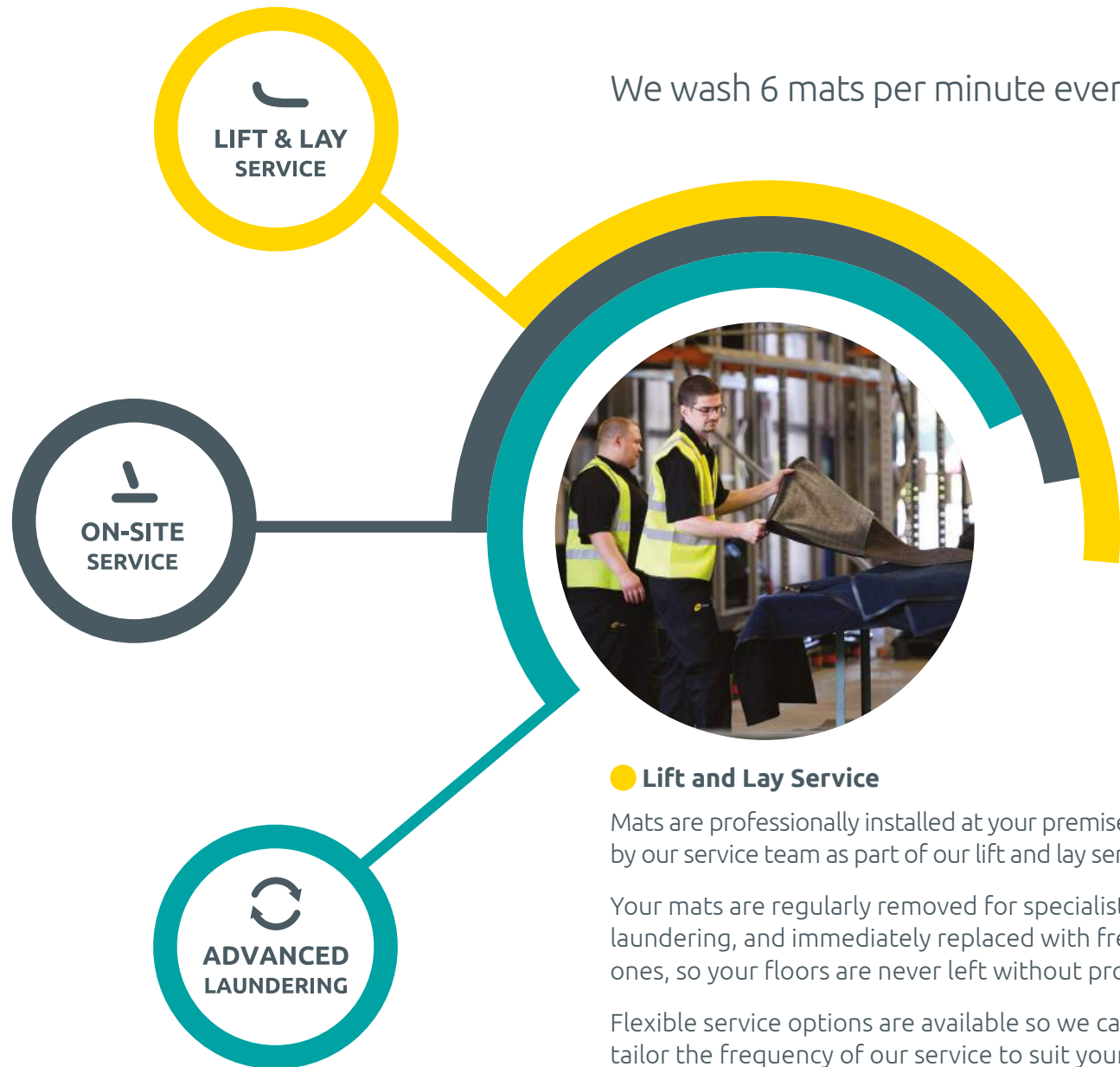
Ultra Plus ●●

Effectively removes and absorbs more heavy duty foot borne dirt and moisture than other matting. Great for areas where grease, oil or heavy duty dirt and moisture can cause problems.

Hand dryer ●

Hand dryers are a typical area for collecting water. Prevent accidents by installing hand dryer mats.

We wash 6 mats per minute every day.



● **Lift and Lay Service**

Mats are professionally installed at your premises by our service team as part of our lift and lay service.

Your mats are regularly removed for specialist laundering, and immediately replaced with fresh ones, so your floors are never left without protection.

Flexible service options are available so we can tailor the frequency of our service to suit your site's requirements.

● **On Site Service**

Our specialist on-site cleaning service ensures your oversize or permanent fit mat well matting is properly cared for. Even the largest matting installations can and should be regularly deep cleaned to keep it looking great, and working efficiently.

● **Advanced Laundering**

Our laundering process is technologically advanced, as well as being environmentally conscious. Your mats are thoroughly deep cleaned to remove all moisture, dirt and grit, so they're returned to you looking bright, smart and rich in colour.



By appointment to
Her Majesty Queen Elizabeth II
Suppliers of Mats and
Matting Services
phs Group, Caerphilly



phs Group, Block B, Western Industrial Estate, Caerphilly CF83 1XH
029 2080 9090 | productinfo@phs.co.uk | www.phsgroup.co.uk

phs Group a company registered in England & Wales. Company Registration No. 05384799

